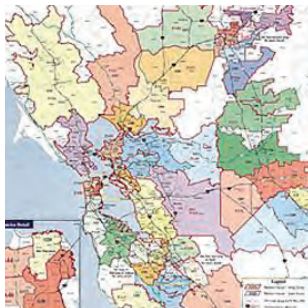
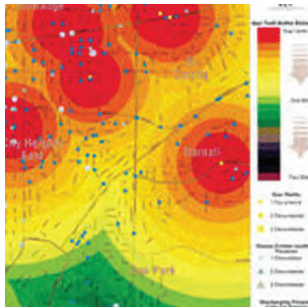
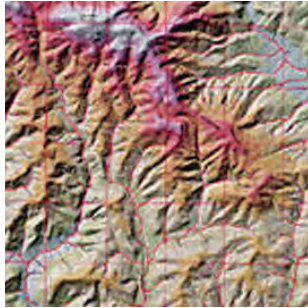
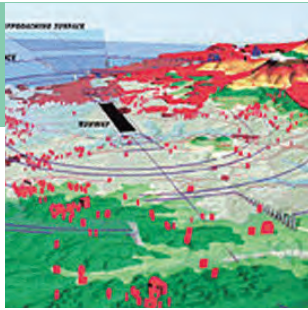


# Geographic Information Systems (GIS)



## CONTACT US

For more information please visit our website at [www.obg.com](http://www.obg.com) or e-mail [info@obg.com](mailto:info@obg.com)

O'Brien & Gere uses geographic information systems (GIS) technology for a variety of engineering and scientific applications. The power of GIS technology lies in its ability to link geographically referenced information such as features on a map or a building plan to a dynamic database. This connection allows for interactive analysis and visual interpretation of vast amounts of data. Furthermore, GIS provides access and utility to data that once stood static on a paper map.

O'Brien & Gere maintains a staff of GIS professionals to support projects in the following disciplines:

- Environmental compliance and remediation
- Facility engineering/management
- Site/civil development
- Wastewater management
- Water resources

Within these disciplines, O'Brien & Gere applies GIS to a variety of projects where data access and spatial representation and analysis are critical to project success. GIS allows multiple data sets such as aerial photographs, utility diagrams, building plans, and analytical data to be overlaid. These data layers can then be easily queried and related, thereby facilitating analysis of spatial and historical trends.

Projects where O'Brien & Gere has successfully applied this type of analysis include:

- Remedial investigations and feasibility studies
- Facilities management
- Human health and ecological risk assessments
- Asbestos investigations
- Municipal systems management
- Air monitoring
- Brownfields' redevelopment
- Litigation support
- Water system design and analysis
- Landscape architecture
- Wastewater design and analysis
- Infrastructure mapping
- Sewer system design and analysis
- Natural resource management

To provide professional GIS services, O'Brien & Gere uses the most current versions of GIS and related software including:

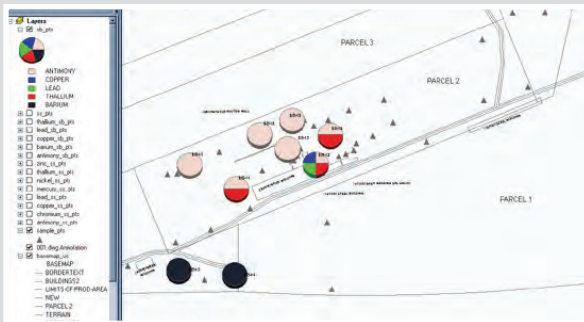
- ArcGIS (ArcInfo and ArcView)
- ArcIMS for web-based GIS projects
- ArcGIS 3D Analyst
- ArcView Spatial Analyst

# Geographic Information Systems (GIS)

- Environmental Visualization Software (EVS)
- Autodesk Map

If your organization is interested in building its own GIS, O'Brien & Gere also performs GIS needs assessment studies and implementation plans. After assessing your organization's existing data and how they are applied, O'Brien & Gere can assist you in the development of a customized system of computer hardware, software, and data. Additionally, members of O'Brien & Gere's GIS group are experienced in GIS instruction and can provide on-site training and continued technical support for your organization.

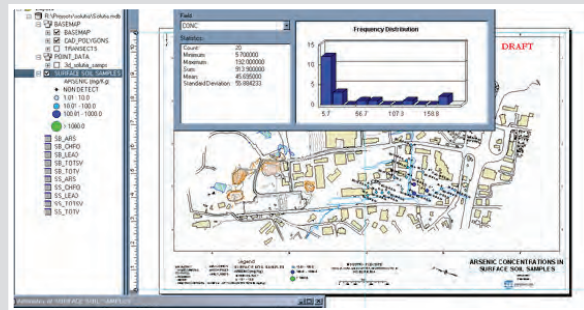
Whatever your GIS requirements may be, O'Brien & Gere has professional staff to provide quality technical services and support to meet your needs.



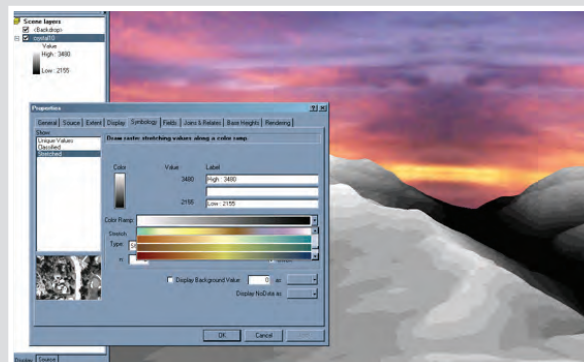
GIS allows quantitative data to be represented in innovative ways. Since the data and map are linked, changes in the database will directly result in changes to the map.



Aerial photographs, AutoCAD drawings, and analytical data can be layered together in a GIS.



Statistical analysis of spatial data is possible with GIS because databases and map features are linked.



GIS software can produce images other than maps or building plans. Three-dimensional site views can offer a new perspective on a project and provide an opportunity to create viewsheds.